

electricITY

A Publication of the Electric Association • www.eachiago.org • Volume 24 • No. 2 • Spring/Summer 2020



Electric Association

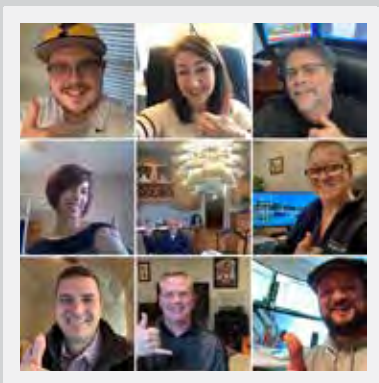
Standing
together,
focused on
the future



WE'RE HERE FOR YOU

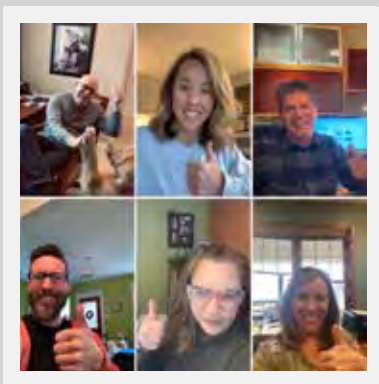
KSA Lighting & Controls is open for business and fully operational.

Our focus is clear, we are here to support you and are equipped to assist you in any way necessary. Whether it be the continued superior service of our team, the technology we have available or the day-to-day interactions that you are used to, you can count on KSA to be there in any business climate.



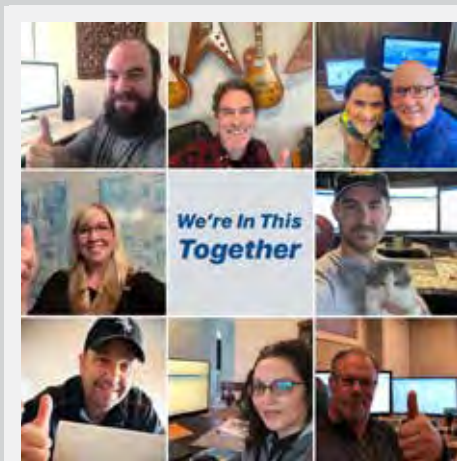
Unprecedented Times

Our #1 priority has always been 'easy to do business with' while being committed to excellence and exceeding expectations for our customers and that will not change during these tough & difficult times.



The World and Business Models Are Changing

We understand things may look and feel different, but KSA will remain your trusted partner, *helping light the way* for you and your customers.



How We Can Help

- Weekly Virtual Learning Series
- Continued access to the KSA team
- KSA Will Call staff available onsite
- 10-day or less Quick Ship available
- \$14 million of local inventory ready for same day pick up



To find out more about how we are here for you during these challenging times visit ksalighting.com

We're In This Together.

A publication of the Electric Association

Our Mission:

To provide members of the electrical industry of Chicagoland and their employees with formal educational opportunities, professional development, information exchange, and member services.

— and —

To serve as the interface between various organizations serving the same industry, and foster the interchange of ideas, product knowledge, and programs in order to create the best external environment possible for conducting business in the electrical industry.

Periodicals Postage paid at Madison, WI 53714 and at additional mailing offices.

Electric Association

Ali Novinger
Executive Director

Editor

Ali Novinger
Electric Association

Contributing Writers

Ali Novinger

Publisher

Little Creek Press
A Division of Kristin Mitchell Design, Inc.

Art Director

Kristin Mitchell

Advertising Sales

Beth Vander Grinten
608.692.2384
beth@littlecreekpress.com

Electri-CITY (ISSN #1096-9993) is a publication of the Electric Association, 17W733 Butterfield Road, Suite B, Oakbrook Terrace, IL 60181. Phone: 630.305.3050. It is published in January, April, September and December by Little Creek Press, 5341 Sunny Ridge Road, Mineral Point, WI 53565, 608.987.3370.

Printing at Inkworks, Inc., Madison, WI 53589.

For advertising information, contact Beth Vander Grinten at Little Creek Press.

Subscriptions included in Electric Association membership dues; non-member subscriptions: \$15 per year.

© Copyright 2018 by the Electric Association. Permission to reprint must be secured in advance of publication and credit given to author and **ElectriCITY**.

POSTMASTER: Send address changes to the Electric Association, 17W733 Butterfield Road, Suite B Oakbrook Terrace, IL 60181

electricITY

A Publication of the Electric Association • www.eachicago.org • Volume 24 • No 2 • Spring/Summer 2020

New Product Guide 13

Save the Dates 22

Departments

President's Report 4

Executive Director's Report 6

EA News

Technology's Impact on Current
Commercial Real Estate Projects 11

Congratulations 2020 Scholarship Winners 12

Industry News 22

Index to Advertisers 27

Affiliated Organizations

EGC—Electric Golf Club Looks to 2020 8

CTF—"All Industry" Golf Outing 19

CSC—Successful Virtual Training 23

ECA—2020 Officers and Executive Committee 24

NECA—Getting Paid in a Pandemic 26



President's Report

George Callas

Callas Kingsley Electrical Sales

Sustaining Support for Our Ongoing Mission

The Electric Association has a 94-year history of supporting the electrical industry of Chicago through great triumphs and unforeseen challenges. Though the current circumstances are uncharacteristic, the perseverance of the Association and the industry are supported by a long-standing history.

As companies were confronted with the COVID-19 pandemic and the resulting policies, many amended policies overnight, some supplied a new demand for PPE, and all have demonstrated the commitment and strength of our industry.

Thank you to all the members of the Electric Association for dedication to not only survive but strive in 2020 and many years to come. You can read about the unique adaptations of the Electric Association objectives and programs for 2020 in the Executive Director's report of this issue.

Through four divisions, education programs, industry events and affiliated organizations, the Electric Association is always working hard to provide the best benefits for our members and support its mission. Our organization provides members of the electrical industry of Chicagoland and their employees with:

- ✕ formal educational opportunities,
- ✕ professional development,
- ✕ information exchange, and
- ✕ member services.

We serve as the interface between various organizations serving the same industry, and foster the interchange of ideas, product knowledge and programs in order to create the best external environment possible for conducting business in the electrical industry. All of this would not be possible without our dedicated members.

Sustaining members are those who contribute to the Electric Association over and above their annual dues payment. These firms demonstrate their commitment to the advancement of the Chicagoland electrical construction industry. The funds are allocated towards development of new programs and services valuable to our industry and membership as a whole. Sustaining members are recognized in all we do.

Thank you to the 2020 sustaining members

President's Club Level

Electrical Contractors' Association of
Chicago & Cook County

Diamond Level

Middle States Electrical
Contractors Association
Powering Chicago

Platinum Level

GE Current, a Daintree Company
Northeastern IL Chapter, NECA

Gold Level

Advance Electrical Supply
The Agency Sales
Allied Tube & Conduit - Atkore Int.
Appleton GRP LLC
A&M
C & C Power
Callas/Kingsley Electrical Sales, Inc.
Casey Electric Sales
ConneXion
Consolidated Electrical Distributors
Continental Electric Construction
Eaton
Electri-Flex Co.
Graybar Electric Co., Inc.
Harger Lightning & Grounding
Hubbell Wiring Device Kellems
Industrial Electric Supply
Jamerson & Bauwens Electrical Contractors
Kelso-Burnett Company
KSA Lighting & Controls, Inc.
Panduit Corp.
PG enlighten
Revere Electric Supply
Rexel USA / Gexpro

Gold Level continued...

Schneider Electric/Square D
Shamrock Electric
Sunrise Electric Supply
Terrance Electric & Technology
Viking Electric
Wheatland Tube - Zekelman Ind.

Silver Level

ABB Electrification Business
Advance Fire & Security Systems
Altorfer
Anamet Electrical, Inc.
Anixter
Bensdorf & Abramson
Crescent Electric Supply Co.
Eclipse Lighting
Excel Ltd. Inc.
Houston Wire & Cable
Hubbell
Priority Wire & Cable
Remke Industries
Steiner Electric
WESCO/Englewood

Bronze Level

A-Z Industries
Broadway Electric
CEMCO
City Electric Supply
Delta-Therm Corporation
Gordon Electric Supply
Interstate Power Systems
Lake Michigan Sales
Milwaukee Tool
Minerallac Co.
MWRDGC
Paramont EO
Siemens Industry Inc.
VERTICAL Lighting and Controls
Weldy Lamont Group Inc.

If you would like to support the Electric Association by joining the Sustaining Member Program or if you would like to learn more details on maximizing your Sustaining Member Benefits, please contact EA Staff at anovinger@eachicago.org. ●



Executive Director's Report

Ali Novinger

Developing New Programs and Creative Connections

New Look! Website and Logo

You may have noticed our Electric Association logo on the cover of this issue and the EA website have an updated design. If you haven't seen it, visit www.eachicago.org today! In addition to the updated logo and graphics, the new website is more mobile friendly and has new spaces to showcase and promote our members.

EA members! Be sure to send your current logo to anovinger@eachicago.org for display on our site. We are also building a video library for the website to include videos from EA member companies to drive site visitors and business to your website and your company.



Electric Association

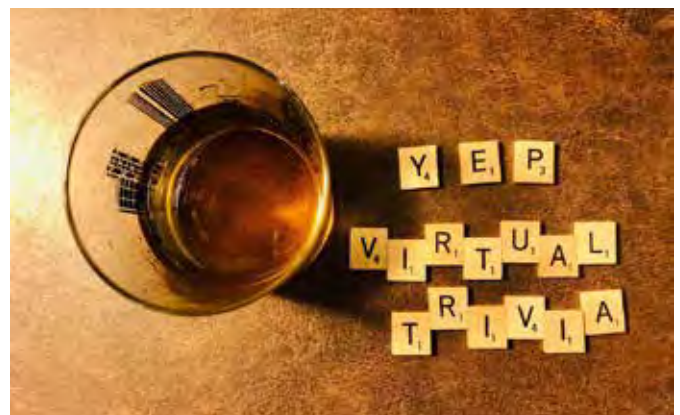


Events for 2020 and Beyond

Along with our member partners, the Electric Association has been pivoting and adapting for new plans in 2020. In lieu of large-scale events, we have held virtual events and meetings and are planning smaller in-person events for the remainder of summer and fall as we continue to provide a valuable forum for our members to connect.

The Communications Technologies Forum has planned a Virtual Panel Event for July 16. This event will bring dynamic industry perspectives together to discuss Technology's Impact on Current Commercial Real Estate Projects. More details available on page 11.

The Young(ish) Electrical Professionals held a virtual trivia night on May 20 with 30 attendees. We are planning a trivia event for September 15 to virtually compete against the Electric Associations of Cleveland, Pittsburgh, and Philadelphia. We are hoping this event will be in-person for our Chicago area Electric Association participants. Watch your emails for more details!



The leadership of the Electric Association and its divisions and affiliated groups are more dedicated than ever to plan valuable content and relationship-building opportunities for members. Our virtual events are seeing increased attendance by expanding the range of attendees. Our small in-person meet-ups can offer new opportunities for connections as we continue to find the silver linings and support each other through 2020 and beyond.

Career Center

EA Corporate Members can post job openings at no charge on the Electric Association Career Center page on the website. Postings are active online for 90 days unless you inform EA to remove earlier or to keep longer. The Electric Association also holds an internal database

of submitted resumes for EA members to review upon request. If you would like to place an employment opportunity online in the career center, please email it to anovinger@eachicago.org.

Industry News

Keep us in the loop and we will help get the word out!

Does your company have a location change or other news necessitating a press release? Be sure to send that information to the Electric Association staff to share on social media and possibly in our next issue of ElectriCITY magazine or the next E-Newsletter.

As always, please contact me at anovinger@eachicago.org or at the EA office at 630-305-3050 to help you maximize your membership value. ●

Vendor Partner Spotlight: Midwest Conference Services

MCS has been a dedicated partner of the EA for the Annual Conference events and many of our signage needs. They now have a virtual platform to support changing needs and events. Check them out at <https://www.mcsnationwide.com/>.



The ANAMET Advantage - ALWAYS Innovating

The Exclusive Manufacturer of ANACONDA SEALTITE® liquid tight wiring conduit and industrial stripwound hose.

- Computer Wiring
- Oil Resistant
- Machine Tool Conduit
- Nuclear Wiring Conduit
- Zero Halogen
- EMI/EMP Shielding
- Custom Colors
- Extreme Temperatures
- Food Grade
- General Construction
- OEM and Industrial
- Fittings

ANAMET Electrical, Inc. 

ANACONDA SEALTITE®

1000 Broadway Ave. East • PO Box 39 • Mattoon, IL 61938
Customer Service: (800) 230-3718 • Fax: (800) 677-2706
Email: info@anametelectrical.com
Office hours: 7:00 am - 5:00 pm Central Standard Time, Monday - Friday
www.anacondasealtite.com





2020 Electric Golf Club President **Kris Fedoruk** **Chameleon Lighting**

Electric Golf Club 2020

This year has presented unforeseen challenges for everyone and our Electric Golf Club is no exception. As you know, the first three golf outings could not be held due to restrictions and policies. We are keeping in contact with the courses and ready to resume outings as soon as we are permitted to do so!

As we eagerly look forward to the day we can meet together again, this is also an opportunity to look back at the strong history of the EGC.

The Electric Golf Club of Chicago was organized in 1923 by Joseph P. Simons, Sr. The founding Committee included Al Brown, Joseph Fink, Frank Glassman, Cecil Hurtt, Frank Jaske, Walter Kelly, James J. Ryan, Joseph P. Simons Sr., Jack Stackhouse, William Steinmetz, Charles Weicensang, Saul Weinress, Arthur Wellman and Blaine Williams. They scheduled six tournaments each year. Its members were recruited from the Chicago area electrical industry's salesmen and executives from manufacturers, agents, and distributors.

In 1930, the electrical contractors under Kelso and Collins wanted to become associated with this club, so the Electric Golf Club accepted the contractors and opened its membership to everyone connected with the electrical industry.

Thank you to our dedicated EGC members and guests for helping the club fulfill its purpose to promote friendly and cooperative relations throughout the electrical industry. Keep an eye on your email as we continue to plan opportunities for camaraderie, relationship building, and golf, too!

Remaining scheduled 2020 EGC Outings:

White Pines: August 6, 2020

Randall Oaks: September 10, 2020

St. Andrews: October 13, 2020 ●



electri-flex

Celebrating **65** *of Quality*
years

Electrifying conduit, innovation and service for 65 years

Since 1955, Electri-Flex has been building cities across America and around the world, serving clients with innovative conduit solutions, superior customer service and genuine family pride. Our signature Liquatite® flexible conduit line is made in Chicagoland to our exacting standards and is built to withstand even the most challenging of conditions. And with nearly 50 options to choose from, we will always find a solution that's exactly right for you. After all: *flexibility matters.*



Electri-Flex Company

222 West Central Avenue
Roselle, IL 60172-1994 USA

Toll-free phone (U.S.): (800) 323-6174
Phone: (630) 529-2920
Fax: (630) 529-0482

www.electriflex.com

DISTRIBUTORS NATIONWIDE  

An aerial photograph of the Chicago skyline at dusk. The city is densely packed with skyscrapers, many of which are illuminated with warm lights. The sky is a deep blue, and the overall scene conveys a sense of urban energy and infrastructure.

POWERING CHICAGO ⚡

IBEW 134/NECA

EXPERIENCE
SAFETY
TRAINING
RELIABILITY

POWERING CHICAGO / LMCC

Five Westbrook Corporate Center #940 | Westchester, IL 60154

POWERINGCHICAGO.COM

Technology's Impact on Current Commercial Real Estate Projects

Communication Technologies Forum VIRTUAL Panel Event 2:00 pm • July 16, 2020

Since the event was postponed in the spring, the full panel has moved to an interactive virtual event!

Persons attending the event will have an opportunity to hear industry experts talk about the new trends in Technology and how they affect all aspects of a commercial real estate project.

- ✓ Panelists will identify key points to consider and how they have dealt with them.
- ✓ Attendees will have an opportunity to ask questions of the panelists

Expert Panel:



← Moderator- Jeff Drenovsky, Operations Director, Environmental Systems Design, Inc.



← Dave Seiling, Vice President, Salas O'Brien



← Ruben Gonzalez, Senior Job Captain, IA Interior Architects



← Kevin Koronkowski, Project Executive, Executive Construction



← James Brannan, Senior Project Manager, CBRE

Thank you to our Sponsors!



Maron Electric

Mersive Technologies

Motorola Solutions

Chatsworth Products

Continental Technologies

Diversified

Environmental Systems Design

Graybar

PanGen

WG Technologies

**The event is FREE for attendees.
Pre-registration is required.**

Go to eachicago.org for registration details.
Contact anovinger@eachicago.org with any questions.

Communication Technologies Forum (CTF) is a division of the Electric Association



The Communication Technologies Forum, division of the Electric Association, was created to bring together all disciplines within the voice and data communications fields in a venue where they can network, be informed and have quality education. To learn more about the CTF, visit us online at: www.eachicago.org/divisions/ctf



Congratulations 2020 Scholarship Winners!

The Chicagoland Electric Association Education is grateful for the donating families and foundations who make this scholarship program possible.

Congratulations to the scholarship winners! These honorees were recognized at the 2020 Electric Golf Club Dinner Dance.



Cristian Tovar
Electric Association Scholarship



**Joshua Pollastrini
& Ally Cermak**
The Lester &
Edward Anixter
Family Foundation
Scholarships (2)



Griffin Corbett
The Steiner-Kerman
Education Foundation
Scholarship



Jonathan Mastrud
The Kinander Family Scholarship



Maxwell Jones
The Joseph J. Archibald Jr.
Memorial Scholarship



Zoey Gallagher
The Rosenstein Family Scholarship



VIRTUAL LEAD CONFERENCE

Leadership Education And Development

Strategic Collaboration

"From Me to We"

Leadership Development Program Competency

tED 30 under 35 Awards Presentation

July 16, 2020 | 12:00 - 5:00 pm CDT

REGISTER NOW!
www.naed.org/lead

SEVENTH ANNUAL ELECTRICAL INDUSTRY NEW PRODUCT GUIDE

Dear Members,

Welcome to our seventh annual Electrical Industry New Product Guide! The purpose of this featured section in our summer ElectriCITY edition is to give our Members an opportunity to promote their latest and greatest products and technologies. We hope that you find this information useful in your future projects and planning, and we encourage you to share this information with the others in your firm.

The distribution of ElectriCITY magazine reaches thousands in the Chicago area electrical market, including hundreds of electrical design firms, and thousands in electrical contracting and distribution. If you are looking for a useful way to promote your new product to the industry, this is it! I would like to personally thank each of our Members that participated in the 2020 New Product Guide:

GE Current | pg. 14

Service Wire | pg. 15

Eclipse Lighting | pg. 15

Milwaukee Tool | pg. 16

nVent | pg. 17

Polywater | pg. 17

Polywater | pg. 18

We appreciate your support, and I hope that you all enjoy the summer edition.

Ali Noringer

Executive Director

SAFER THAN THE SUN*



Disinfect any space with 365DisInFx™ Technology



GE current
a Daintree company

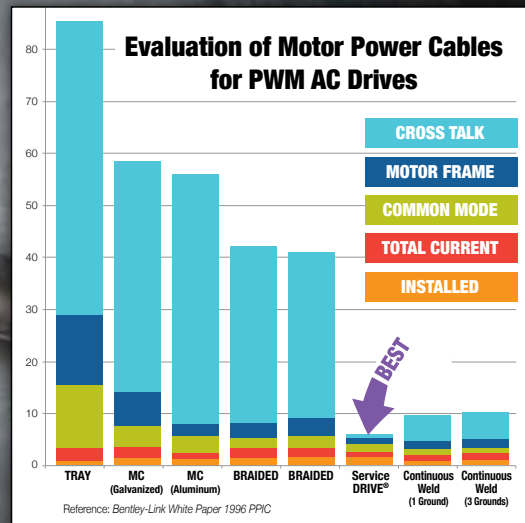
*Less than 3 minutes of exposure to direct sunlight is equivalent to the maximum amount of actinic UVA light that a person would be exposed to in a typical workday under Current's disinfection lighting

EC&M
Product of the Year
 2020 Category Winner

Service **DRIVE**
 VFD Cable System



DRIVE
PERFORMANCE
The Proven Solution to Common VFD Issues



For more information, visit servicewire.com/servicedrive or call:

800-624-3572
 Culloden, WV

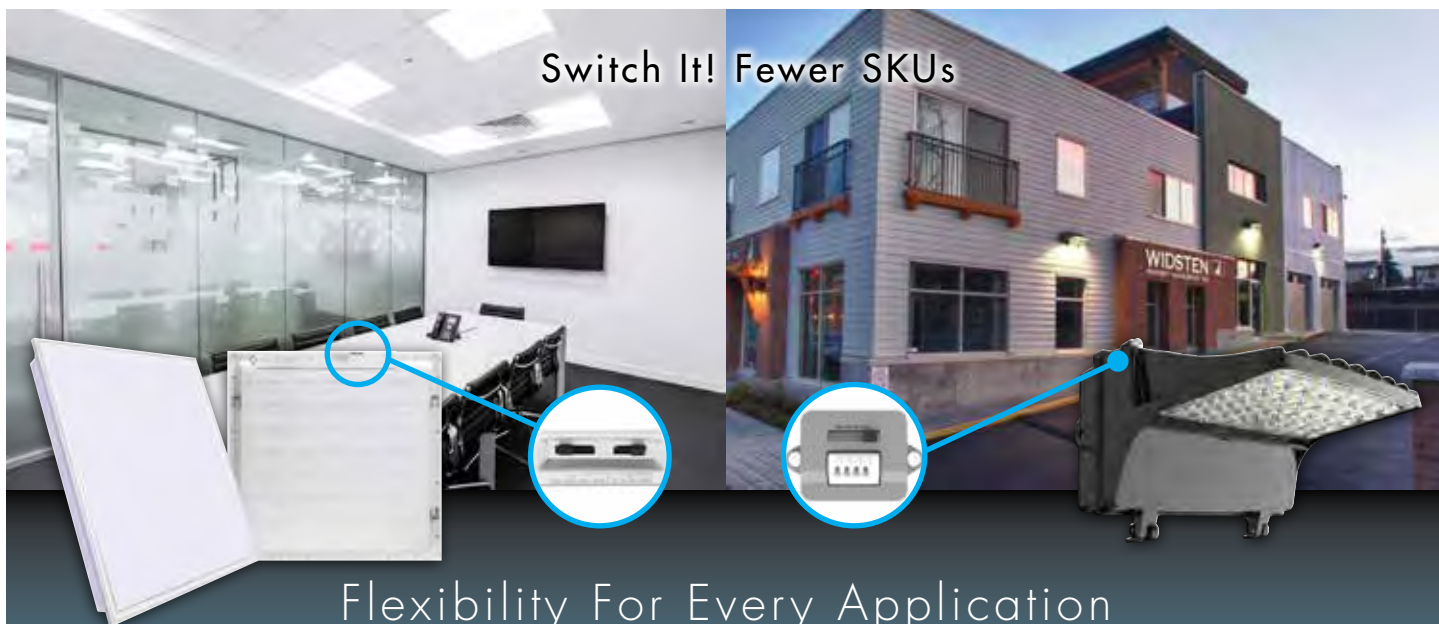
800-231-9473
 Houston, TX

877-623-9473
 Phoenix, AZ

LEED
 FRIENDLY

Made in the
 USA

Switch It! Fewer SKUs



Flexibility For Every Application

Eclipse Lighting Inc. offers products with tunable technology allowing you to adjust your settings to best meet your needs. Our indoor recessed **PWT-J** backlit panel comes with built-in dipswitches which gives the user the freedom to choose between 4 color temperatures and 4 wattages. For outdoor locations, the tunable **Dresden-T** wall pack with similar capabilities is also available. For additional information on these products and more, please consult our sales team at quotes@eclipselightinginc.com or give us a call at (847) 260-0333.

ECLIPSE
 LIGHTING

www.eclipselightinginc.com



**EQUIPMENT REDEFINED
TRADE FOCUSED
SYSTEM WIDE**

The MX FUEL™ Equipment System revolutionizes the light equipment market by delivering the performance, run-time and durability demanded by the trades without the hazards associated with emissions, noise, vibration and the frustrations of gas maintenance.

This completely compatible system goes beyond the limitations of gasoline and power-cord units, utilizing the industry's most advanced batteries, motors and electronics to deliver a best-in-class experience for users.

THIS IS EQUIPMENT REDEFINED.



MX FUEL™ 14" Cut-Off Saw Kit MXF314-1XC

Specifications:

Blade Diameter	14"
Cut Depth	5"
Blade Arbor	1" / 20 mm
RPM	5,350
On-Board Water Delivery	Yes
Weight w/ Battery	32.1 lbs
Push Button Activation	Yes
ONE-KEY™ Compatible	Track and Manage
Battery Compatibility	Fits All MX FUEL™ Batteries
Warranty	2 Year Equipment, Battery & Charger

Kit Includes: MX FUEL™ 14" Cut-Off Saw, (1) MX FUEL™ REDLITHIUM™ XC406 Battery Pack, MX FUEL™ Charger, Wrench, Hex Key, Quick Connect, Contractor Bag



MX FUEL™ Handheld Core Drill Kit w/ Stand MXF301-2CXS

Specifications:

Maximum Bit Capacity	6"
RPMS Low / High	790 / 1,550
Spindle Size	1-1/4"-7
Wet / Dry Coring	Both
On-Board Water Delivery	Yes
Weight: Machine w/ CP Battery	21.6 lbs
Push Button Activation	Yes
ONE-KEY™ Compatible	Track and Manage
Battery Compatibility	Fits All MX FUEL™ Batteries
Warranty	2 Year Equipment, Battery & Charger

Kit Includes: MX FUEL™ Handheld Core Drill, (1) MX FUEL™ REDLITHIUM™ XC406 Battery Pack, (1) MX FUEL™ REDLITHIUM™ CP203 Battery Pack, MX FUEL™ Charger, Compact Core Drill Stand, Trigger Lock, 5/8"-11 Bit Adapter, Quick Connect, Hard Case with Wheels



MX FUEL™ Breaker Kit MXF368-1XC

Specifications:

Chuck Size	1-1/8" Hex
Blows Per Minute	1,300
Impact Energy (ft-lbs)	50
Vibration	4.9 m/s²
Soft Start	Yes
Weight w/ Battery	63.9 lbs
Push Button Activation	Yes
ONE-KEY™ Compatible	Track and Manage
Battery Compatibility	Fits All MX FUEL™ Batteries
Warranty	2 Year Equipment, Battery & Charger

Kit Includes: MX FUEL™ Breaker, (1) MX FUEL™ REDLITHIUM™ XC406 Battery Pack, MX FUEL™ Charger, Cart, (3) Chisels

MX FUEL™ Sewer Drum Machine w/ POWERREDZ™ Kit MXF501-1CP

Specifications:

Drum Capacity	100'
Cable Capacity	5/8" & 3/4"
Cable Spin Speed	200 RPM
Max Drain Line Capacity	3" – 8" up to 200'
Weight w/ Battery	125 lbs
Lift Assist	Yes, POWERREDZ™
Push Button Activation	Yes
ONE-KEY™ Compatible	Track and Manage
Battery Compatibility	Fits All MX FUEL™ Batteries
Warranty	2 Year Equipment, Battery & Charger

Kit Includes: MX FUEL™ Sewer Drum Machine w/ POWERREDZ™, (1) MX FUEL™ REDLITHIUM™ CP203 Battery Pack, MX FUEL™ Charger, 3/4" Anchor Cable



AVAILABLE Q3 2020

MX FUEL™ ROCKET™ Tower Light/Charger Kit MXF041-1XC

Specifications:

Max Lumens	27,000
Modes	High / Med / Low
Collapsed Height	44"
Extended Height	10'
Weight w/ Battery	110 lbs
Ingress Rating	Outdoor Use
Push Button Activation	Yes
ONE-KEY™ Compatible	Customize. Track. Manage.
Battery Compatibility	Fits All MX FUEL™ Batteries
Warranty	2 Year Equipment and Battery

Kit Includes: MX FUEL™ ROCKET™ Tower Light/Charger, (1) MX FUEL™ REDLITHIUM™ XC406 Battery Pack



MX FUEL™ CARRY-ON™ 3,600W/1,800W Power Supply MXF002

Specifications:

Peak Watts	3,600W
Running Watts	1,800W
Outlets	Two 120V 15A Outlets
Inverter Output	Pure Sine Wave
Integrated Charger	Yes
Push Button Activation	Yes
ONE-KEY™ Compatible	Track and Manage
Battery Compatibility	Fits All MX FUEL™ Batteries



Try the
New

nVent ERICO
Cadweld Plus
Impulse Exothermic
Welding Control Unit
CADWELD.COM



CONNECT AND PROTECT

Introducing Our Latest Innovation in Exothermic Welding

Precision engineered, the new control unit lets you choose your power source: from off-the-shelf AA-batteries to the rechargeable Lithium-Ion packs you have on your job site. Rechargeable batteries from Milwaukee® or DEWALT® can be used to power approximately 1500 connections using a 4Ah battery (sold separately).

Find everything you need to specify, select and install the full exothermic welding system at **Cadweld.com**.



©2020 nVent. DEWALT is a registered trademark of Black & Decker Corporation. Milwaukee is a registered trademark of Milwaukee Electric Tool Corporation. All other trademarks are the property of their respective owners. H86194-EN-2006

HAVE A NEW PRODUCT TO PROMOTE?

Don't wait until the next
New Product Guide issue. Promote
your products or services within the
pages of the ElectriCITY Magazine.
Contact Beth to reserve your space
in the Fall and Winter 2020 issues

TODAY!

Beth Vander Grinten • 608.692.2384
beth@littlecreekpress.com



Electric Association



Polywater AFT – Conduit Sealant



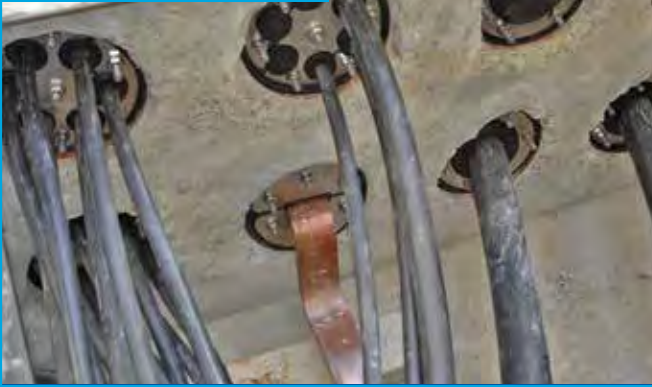
- **Easy Deployment** Installs in seconds
- **Multiple-Use Can** Seals 12 2-inch conduits
- **Reliable** Holds 11 feet of continuous water head pressure
- **Meets** NEC codes for sealing raceways
- **Removable** Can be removed to replace cable

Polywater
Solutions at work.

polywater.com | 651-430-2270



New! PHRD Seals



- **Simple** Easy installation for new or installed cables/pipes
- **Unique** Stainless steel, split design, single-piece construction
- **Holds** 36 PSI of water head pressure and gas tight
- **Trusted** UL Certified and meets NEC Codes
- **Suitable** for use in Class 1, Div 2 Hazardous Locations per NEC 501.10(B)(4)

Polywater

Your total inside and outside solution

**hauff-
technik**

www.polywater-haufftechnik.com | 651-430-2270

Thank You

We hope you enjoyed this year's
Electrical Industry New Product Guide.

Thank you for your support
of the Electric Association.

Customize A Course for Your Company

Course Schedule & Online Registration at www.eachicago.org

Looking for education not currently offered by the EA's Education Foundation, OR, want to hold one of the Foundation Courses at your office for a group of staff members? Customize a course for your company. Contact the Education Foundation and provide a description of the course you are looking for. This course can be held for 6 - 20 students, and shall be amended to fit your company's schedule. Daytime, evenings, and weekend seminars can be developed. In addition to the regularly scheduled electrical courses offered by your CEAEF, here are a few examples of topics that are available:

Why take our Classes?

Inside / Outside Sales training
 Customer Service / Communication Skills
 Computer Software Training (ie: Microsoft Office)
 English as a Second Language
 Team Development
 Executive Leadership Development
 Supervisory / Management Skills
 Finance
 Coaching, Mentoring

Change Management
 Time Management
 Strategic Planning
 Behavioral Interviewing
 Human Resource Topics
 Negotiating
 Planning / Project Management
 Conflict Resolution

Visit eachicago.org/education
for details and registration.



Contact us today for more information! | Chicagoland Electric Association Education Foundation
p: 630-305-3050 | e: anovinger@eachicago.org | Visit us online: www.eachicago.org/education



COMMUNICATION TECHNOLOGIES FORUM "ALL INDUSTRY" GOLF OUTING

Welcoming the electrical and communication industries of Chicagoland

September 17, 2020

Cog Hill Golf and Country Club | Course One

12294 Archer Avenue | Lemont, IL 60439



Shotgun Start: 1:00pm

To follow current restriction and safety precautions, this outing is LIMITED.

We strongly encourage you register early. We have also included an option for Golf Only for the 2020 outing.

Full Registration Includes: Greens Fees, Cart, use of Driving Range, Dinner on the Patio
Golf contests, Prizes, and Great Industry Camaraderie!

Outing Registration Fee: \$175 per golfer for golf and dinner

Golf Only: \$125 per golfer • Dinner Only: \$75 per person

Please sign-up by September 9th by returning the registration form to:

The Electric Association | 17W733 Butterfield Road, Suite B | Oakbrook Terrace, IL 60181

Corporate Sponsorship Opportunities are Available - See below for descriptions.

Contact Ali Novinger with questions: anovinger@eachicago.org

OUTING SPONSORSHIPS:

CORPORATE HOLE SPONSORSHIPS (\$300)

This sponsorship includes signage at registration, on a hole at the course, and the dinner party. Special recognition at dinner & in *ElectriCITY* magazine, and on our social media platforms.

HOLE IN ONE CONTEST SPONSOR (\$750)

This sponsorship includes signage at registration and dinner. Your company logo will be printed on signage at the contest holes. Special recognition at dinner & in *ElectriCITY* magazine, and on our social media platforms.

BEVERAGE, LUNCH, OR DINNER SPONSORSHIPS (\$750)

This sponsorship includes signage at registration and dinner. Your company logo will be printed on each golfer's beverage, lunch, or dinner ticket. Special recognition at dinner & in *ElectriCITY* magazine, and on our social media platforms.

All sponsors have the option to include corporate promotional item in the golf giveaways for the outing. Please drop off or ship your items to the Electric Association by September 9th.

Please contact us with questions: Electric Association 630.305.3050 | anovinger@eachicago.org

Sponsorship Opportunities and Registration

- ☐ Corporate Hole Sponsor: \$300
- ☐ Hole in One Sponsor: \$750
- ☐ Beverage Sponsor: \$750 (2 available)
- ☐ Lunch/Dinner Sponsor: \$750 (2 available)

Sponsoring Company: _____

Address: _____ City: _____ State: _____ Zip: _____

Contact Person: _____ Phone: _____

GOLF OUTING: You may register as a Foursome, Twosome, Single golf only or come for dinner only.

\$175 for Golf and Dinner

\$125 for Golf Only

\$75 for dinner

of golfers: _____ # of dinners: _____

Captain: _____ **Captain Company:** _____

Golfer 2: _____ **Golfer 2 Company:** _____

Golfer 3: _____ **Golfer 3 Company:** _____

Golfer 4: _____ **Golfer 4 Company:** _____

MAIN GOLFER'S CONTACT INFORMATION:

Name: _____ Company: _____

Phone: _____ Email: _____

Please choose one of the following payment options:

- ☐ Check
- ☐ Visa
- ☐ MasterCard
- ☐ American Express (credit card payments incur a 5% convenience fee)

Total Amount Due \$ _____

Card Number _____ Exp. Date / / 3-Digit Code _____

Cardholder Signature: _____

- ☐ Please check here if you need a receipt emailed to you.

Thank you for your registration!

Please return this form with payment to:

Electric Association • 17W733 Butterfield Road, Suite B • Oakbrook Terrace, IL 60181

Phone: 630.305.3050 • Email: anovinger@eachicago.org • Web: www.eachicago.org

**The leader of each golf group will receive an email a few days prior to the outing with the outing itinerary, and golf information to share with your guests.*



Save the Dates

Add these important Electric Association and industry events to your calendar!



July 16, 2020 - Technology's Impact on Current Commercial Real Estate Projects-Virtual Event

August 6, 2020- EGC Outing



August 24-25, 2020 - NAED Suite Meeting

September 10, 2020 - EGC Outing



September 14, 2020 - Consulting Electrical Engineers Membership Meeting

September 15, 2020 - YEP Trivia Night



September 16, 2020 - EA Board of Directors Meeting

September 17, 2020- CTF "All Industry" Golf Outing



September 21, 2020 - Chicago Electrical Estimators Association Meeting

October 5-7, 2020 - NECA LIVE



October 12, 2020 - Consulting Electrical Engineers Membership Meeting

October 13, 200 - EGC Outing



October 19, 2020 - Chicago Electrical Estimators Association Meeting

Industry News

Viking Electric Moves to New Location in Chicago

Viking Electric, A Sonepar Company, announced today that the company will close the doors at its former Brook Electrical Supply location at 1958 West Lake Street in Chicago and move to a larger facility at 1925 West Fulton Street in Downtown Chicago. Viking Electric will begin operating at the new Fulton Street location on Monday, June 8, 2020.

Mike Huitsing will continue as the Sales Operations Manager at the new Viking Electric location in Downtown Chicago. "We are proud to move into a larger facility, in a new location," Huitsing said. "The move will allow us to grow with our associates and customers in the Chicago market," he said.

The new Viking Electric address includes a 17,000-square-foot facility with a 1,700-square-foot city desk showroom and 1,700 square feet of office space. The warehouse occupies the remaining 13,600 square feet, and includes two dock doors and one overhead drive-in door for larger deliveries. The company noted that the new location also includes off-street parking for its customers.

All three of Viking Electric's Chicago area locations are being managed by Terry Reister, Viking Electric's Director of Business Operations - Chicago. "The move to a larger facility will allow Viking Electric to provide quality electrical products and top-notch service offerings to our customers in Chicago," Reister said. "It is our vision to be the indispensable electrical supply chain partner central to our customers' success," he said. ●

Successful Virtual Training

from the Construction Safety Council

Ensuring workers receive the necessary safety training amid the COVID-19 pandemic continues to present unique challenges for construction companies. While construction work has been deemed an essential business in the Chicago area, and many construction trades have remained on the job, many companies providing safety training have closed their doors. For those that have remained open, or have re-opened over the past few months, many adjustments have been made to ensure training meets the necessary standards, while workers remain safe. The Construction Safety Council is one of those companies. Historically, the Construction Safety Council provided all their training in traditional classroom style settings. As the pandemic spread, and new restrictions were implemented, it was evident that the traditional way of delivering training would no longer work as the only delivery method. For a brief period of time, the Construction Safety Council closed its doors, put their thinking caps on, and came up with alternative ways to address the much-needed safety training needs of their clients.

NEW LOOK, SAME MISSION

Effective Monday, May 18th, the Construction Safety Council re-opened their doors for training, still focused on the same mission, to 'Improve Human Safety Performance through Education and Training', only now with a new twist — the CSC has launched a variety of distance learning opportunities including:



COMPUTER-BASED TRAINING

for students to learn when and where they choose



VIRTUAL CLASSROOMS

for students to attend live, interactive classes via teleconferencing platforms



WEBINAR TRAINING

For students to attend short, targeted topics, in live or recorded formats



IN-PERSON TRAINING

For those students who learn best in traditional classrooms

For those students who learn best in traditional classrooms, the CSC still offers in-person classrooms as well; only now when students arrive for training, they are finding smaller class sizes, wellness checks, temperature scans, six-foot distancing, individualized food service and more to keep everyone healthy and safe.

CSC also continues to take training on the road, bringing in-person training to local employers.

Although times have changed, the CSC remains Chicagoland's premier source for construction safety training and is committed to providing high-quality, OSHA-authorized training in a healthy environment that keeps everyone safe. See available classes, in all formats, on the training calendar at www.BuildSafe.org. You can also reach them at 708-449-8600. ●





ECA Electrical Contractors Association of City of Chicago

Richard Jamerson | ECA President,
Jamerson & Bauwens Electrical Contractors, Inc.

ECA 2020 Officers and Executive Committee

The Electrical Contractors' Association of City of Chicago (ECA) is a construction trade association that provides business and labor relations services to nearly 600 electrical contractors in Cook County, Illinois. The Association works with its industry partner, Local Union #134, IBEW to negotiate and administer labor agreements, coordinate apprentice and journeyman level training, as well as promotion of the industry on behalf of these employers. The ECA is also known as the Chicago and Cook County Chapter of the National Electrical Contractors Association (NECA). Currently, 70 signatory firms are members of the Electrical Contractors' Association of City of Chicago (ECA) / Chicago and Cook County Chapter, NECA.

The Association held its Officers and Executive Committee member elections for 2020. The following lists the ECA member volunteers in their leadership roles:



President:

Richard Jamerson,
Jamerson & Bauwens Electrical
Contractors, Inc.



Vice President and Treasurer:

Frank Gurtz, Gurtz Electric Company



NECA Governor:

Eric Nixon, Maron Electric Company

Executive Vice President and Secretary:

Mark Thomas (not pictured)

Executive Committee Members

Katie Canino, Canino Electric Company

William Cullen, Sharlen Electric Company

Kendra Dinkins, Taylor Electric Company

Robert Fimbianti, Linear Electric, Inc.

Frank Gurtz, Gurtz Electric Company

Richard Jamerson, Jamerson & Bauwens
Electrical Contractors, Inc.

Jerry McGlynn, McWilliams Electric Company, Inc.

Gary Misicka, Lyons Electric Company, Inc.

Eric Nixon, Maron Electric Company

Thomas Rivi, G & M Electrical Contractors Company

Nicholas Santoro, JMS Electric, Inc.

William Schult, Super Electric Construction Company

Michael Schwarz, Advent Systems LLC

We wish to thank our Officers and Executive Committee members, as well as all of the Association membership for their dedication to not only the ECA, but to the enhancement of the industry. It is through the participation of our member volunteers that has kept the Association on the forefront of the industry. We hope that all signatory contractors within the Cook County area will make the commitment to the industry and join our Association. Please contact the ECA office at: (708) 531-0022 or visit our website at: www.ecachicago.com for membership information, as well as information regarding Chapter and NECA programming. ●



We're Doing Things Differently in 2020

In my 40 years in the electrical distribution industry, rarely have I looked forward to a year with more anticipation and excitement. 2020 is a big year for WESCO, especially in the Windy City. Many people don't know that WESCO is one of the largest distributors in Chicago. We bring 7 locations together throughout the Chicagoland area, and have over 920,000 sq. ft. of warehouse space nationally. We also recently opened a distribution center in Carol Stream, IL, so we're everywhere you are.

Beyond wire and cable products, I'm excited to be supporting our construction customers with an increased VMI offering including staged-and-stored lighting, among other value-adds, to help their businesses run smoother.

My team and I are eager to partner with you this year, whether your goal is to expand, streamline your supply chain, or become more environmentally friendly. Let's tackle 2020 together.



Rob Burnett
District Manager,
Chicago Lighting & Construction

WESCO is investing in new facilities across the country, including a new distribution center in Chicago.

With more than 920,000 sq. ft. of warehouse space under the WESCO banner, we're everywhere you are and ready to help you get the job done.

- Wire & Cable Management Services
- Material Management Programs
- Jobsite Boxes, Carts & Containers
- Product Kitting Services

Within 400 miles of Chicago? Orders in by 3 p.m. are eligible for next morning will call pick-up.



630-296-2555

200 E. LIES RD, CAROL STREAM, IL 60188
WWW.WESCO.COM BUY.WESCO.COM



NECA National Electrical Contractors Association
Tom Morton | Chapter President

Getting Paid in a Pandemic

In our business lives, our concern for the well-being of our employees has been, and continues to be, front and center over the past few months.

As business owners and leaders, however, the well-being of our companies is also ever present on our minds. If you haven't been focused on cash flow these days, then you would likely be in a very small minority of your peers. Even some of our most reliable customers have faced understandable challenges with managing accounts payable during these unprecedented times.

While you are examining ways to maintain and improve cash flow during the pandemic, there are some resources that might be of interest to you. NECA's research arm, Electri International, recently conducted a study titled "Pandemics and Construction Productivity: Quantifying the Impact". The preliminary findings of this study indicate that self-performing contractors have experienced a productivity impact of 20% due to the pandemic. The study also cites a rule of thumb that at 10% negative impact on productivity can result in a 100% impact on profitability. It will be important for many of our companies to be prepared to recoup these unanticipated costs. NECA has already shared the preliminary results of the study with their membership and the information is readily available.

It is also an opportune time to revisit some legislative progress that NECA and other construction trade associations achieved last year. You may recall that a legislative coalition known as the Illinois Mechanical Specialty Contractors Association (IMSCA) was successful this past August in getting a retainage reform Act signed into law. In part, Public Act 101-0432 provides: *No construction contract may permit the withholding of retainage from any payment in excess of the amounts*

permitted in this Section. A construction contract may provide for the withholding of retainage of up to 10% of any payment made prior to the completion of 50% of the contract. When a contract is 50% complete, retainage withheld shall be reduced so that no more than 5% is held. After the contract is 50% complete, no more than 5% of the amount of any subsequent payments made under the contract may be held as retainage. The law applies to most private construction projects. It was an amendment to the Contractors Prompt Payment Act. The importance of making sure that retainage is being handled properly is especially evident in times like these.

The Contractor Prompt Payment Act itself, which was another watershed achievement by IMSCA, should also be especially useful in our current times. That original bill provided that the owner, or owner's agent, is required to pay the amount due to a contractor within 15 days after approval and further provides that the payment application is deemed approved 25 days after the owner receives it unless they respond in writing with the reason for withholding payment. It also has provisions for a contractor to suspend performance if not paid, as well as enabling the contractor to charge 10% interest when not paid in accordance with the Act.

The NECA Learning Center also has timely virtual training, such as "Managing the Lifeblood of Contracting-Cash Flow"; "Change Order Management"; and "Using NECA's Claim Management Resources" to name a few. So, as you endeavor to make sure your business is staying well during the pandemic, be sure to reach out to the local NECA Chapter office for the latest in resources and assistance. ●

EDGE - L1DIP

EXCELLENT UNIFORMITY. SUPERIOR PERFORMANCE.

The EDGE is a linear suspended LED luminaire offering excellent uniform direct/indirect lighting distribution making it the perfect addition to any modern office space! This versatile luminaire can be mounted individually in 4 and 8 foot sections or it can also be joined to create a continuous row system providing linear illumination. You can choose from 2 lumen package and color temperature of 3 500 K and 4 000 K.

KEY FEATURES

- Housing is made of extruded aluminum
- Frosted acrylic lens is standard
- Lumen packages: 4 200 lm - 8 600 lm
- Voltage: 120-277 V, 0-10 V dimming standard
- Long-life LEDs that provide 80+ CRI
- Estimated lifespan of over 50 000 hours to L70



Archibald & Meek
Manufacturer's Representative
630-833-7377
www.amirep.com

STANDARD® STANPRO

www.standardpro.com • www.stanprols.com • 1-800-268-7702

Be part of this award winning publication.

ADVERTISE TODAY!

For advertising information contact:

Beth Vander Grinten • 608.692.2384

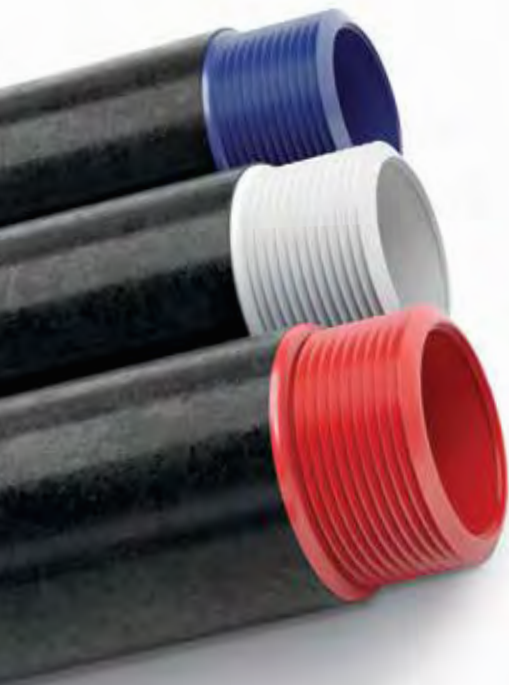
beth@littlecreekpress.com

Index to Advertisers

Anamet Electrical, Inc.	7
EA Education Foundation	18
Electri-Flex	9
KSA Lighting	IFC
Standard Pro	27
WESCO Distribution	25
Wheatland Tube (a division of Zekelman Industries)	BC



MOST PVC-COATED RIGID PRODUCTS CONTAIN IMPORTED STEEL



SPECIFY AMERICAN-MADE RIGID STEEL CONDUIT AND ELBOWS, COUPLINGS & NIPPLES

Most producers of PVC-coated conduit use rigid shells or buy finished product from other countries and only coat it in America. Some label the product as “Made in USA,” letting the consumer believe the imported steel is American-made. But when you specify Wheatland Tube’s rigid conduit and elbows, couplings & nipples under the plastic, you’ll know the steel is 100% made and melted in the USA, 100% of the time.

Visit **wheatland.com** or call **800.257.8182**
to find a local distributor.